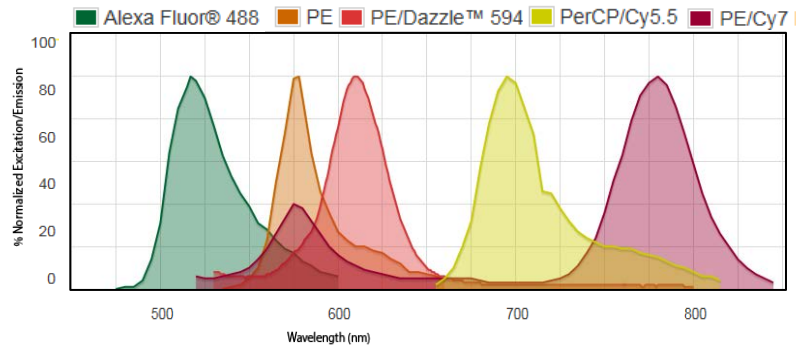


## Sony MA900 fluorochrome guide

Sony MA900 流式分选仪配备有 4 根激光器 (488, 405, 561 和 638 nm lasers), 可检测荧光通道多至 12 色, 请参考以下表格挑选合适的荧光素设计实验染色方案:

### For spot #1 (488/561 nm lasers):

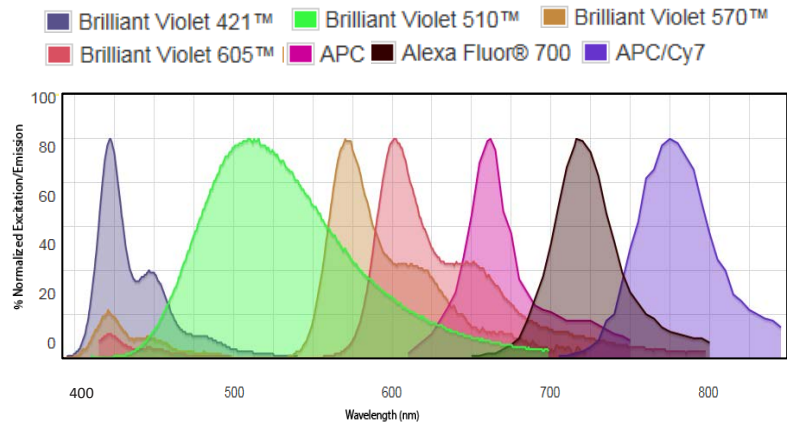
FL #	BPF	Fluorochromes
FL1	525/50	FITC/GFP
FL2	585/30	PE
FL3	617/30	PE-Dazzle594
FL4	695/50	PerCP-Cy5.5
FL5	785/60	PE-Cy7



Fluorochrome	FL1	FL2	FL3	FL4	FL5
	525/50	585/30	617/30	695/50	785/60
EGFP	●				
FITC	●				
Alexa Fluor® 488	●				
EYFP	●				
mCitrine	●				
CFSE	●				
PE		●			
dsRed		●			
tdTomato		●			
mCherry			●		
PE-Texas Red®			●		
PE/Dazzle			●		
Propidium Iodide			●		
mPlum				●	
7-AAD				●	
PE-Cy5				●	
PerCP				●	
PE-Cy™5.5				●	
PerCP-Cy5.5				●	
PerCP-eFluor 710				●	
PE-Cy™7					●

**For spot #2 (405/638 nm lasers):**

FL #	BPF	Fluorochromes
FL6	450/50	BV421/PacBlue
FL7	525/50	BV510
FL8	585/30	BV570
FL9	617/30	BV605
FL10	665/30	APC/BV650
FL11	720/60	AF700/BV711
FL12	785/60	APC-Cy7/BV785



Fluorochrome	FL6 450/50	FL7 525/50	FL8 585/30	FL9 617/30	FL10 665/30	FL11 720/60	FL12 785/60
BD Horizon Brilliant Violet (BV421)	•						
Alexa Fluor® 405	•						
DAPI	•						
Pacific Blue™	•						
mCFP	•						
Hoechst 33342	•						
AmCyan		•					
BV510		•					
BV570			•				
BV605				•			
BV650					•		
BV711						•	
BV785							•
APC					•		
Alexa Fluor® 647					•		
APC-Cy5.5						•	
Alexa Fluor® 700						•	
APC-Cy7							•
APC-Alexa® Fluor 750							•